

# Zeeleeuw Cruise 07/222: report

## Subscriber

Peter Staelens  
Institute: UG – RCMG  
Telephone: +32 (0)9 264 4571  
E-mail: Peter.Staelens@UGent.be

1. Zeeleeuw Cruise 07/222
2. Participants
3. Program objectives
4. Measurements
5. Operations

## **1. Zeeleeuw Cruise 07/222: 13 April 2007**

1.	Date / hour	Oostende departure: 16/04, 9h00 Oostende arrival: 16/04, 17h00
2.	Chief scientist  Participating institutions	Peter STAELENS  UG- RCMG
3.	Area of interest	North of Vlakte van de Raan
4.	Number of scientists	2
5.	Infrastructure needed on the quay or onboard for the embarkment / disembarkment of equipment?	onboard crane

## **2. Participants**

UG-RCMG	Peter Staelens *	X
UG-RCMG	Isabelle Du Four	X
Total		2

\* chief scientist

### 3. Program objectives

#### **MESH (Development of a framework for Mapping European Seabed Habitats) (RCMG)**

MESH is an EU Interreg IIIb-funded international marine habitat mapping programme aiming at the development of international standards and protocols for seabed mapping. Partnership: Joint Nature Conservation Committee (JNCC, coordination) (UK); Ghent University (B); IFREMER (FR); Marine Institute (IRL); Alterra-Texel (NL); TNO Environment, Energy and Process Innovation (NL); Centre for Environment, Fisheries and Aquaculture Science (CEFAS) (UK); Department for Agriculture and Rural Development, Northern Ireland (DARD) (UK); English Nature (UK); Envision Mapping Ltd (UK); National Museums and Galleries of Wales (NMGW) (UK); Natural Environment Research Council (British Geological Survey) (BGS) (UK)

### 4. Measurements

Side-scan data was acquired using the KLEIN3000 side-scan sonar to visualize the *Owenia fusiformis* patches, which were already observed on multibeam images based on data of the Belgica campaign ST0624 and ST0703b (Figure 1 and 2). The position of the side-scan lines are indicated in figure 3. Both Quinsy as the SonarPro software of Klein were used for recording.

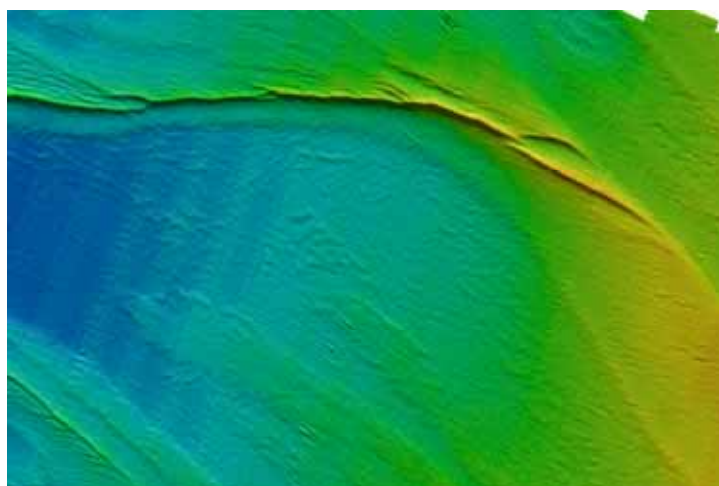


Figure 1: Detail of the digital terrain images of Belgica campaign ST0624, on which *Owenia fusiformis* patches are observed.

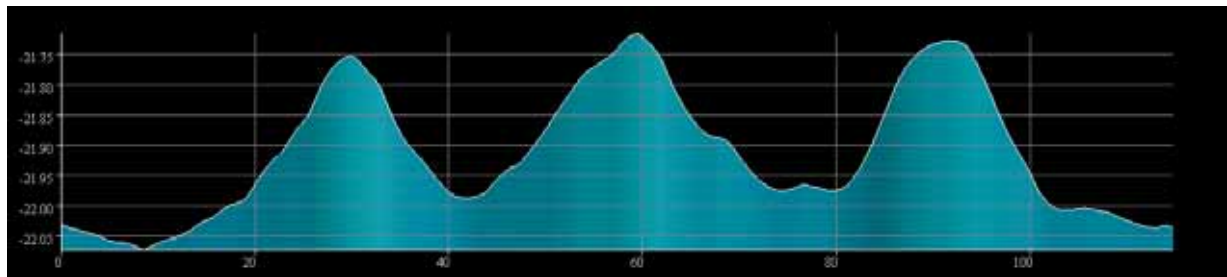


Figure 2: Cross-section of *Owenia fusiformis* patches

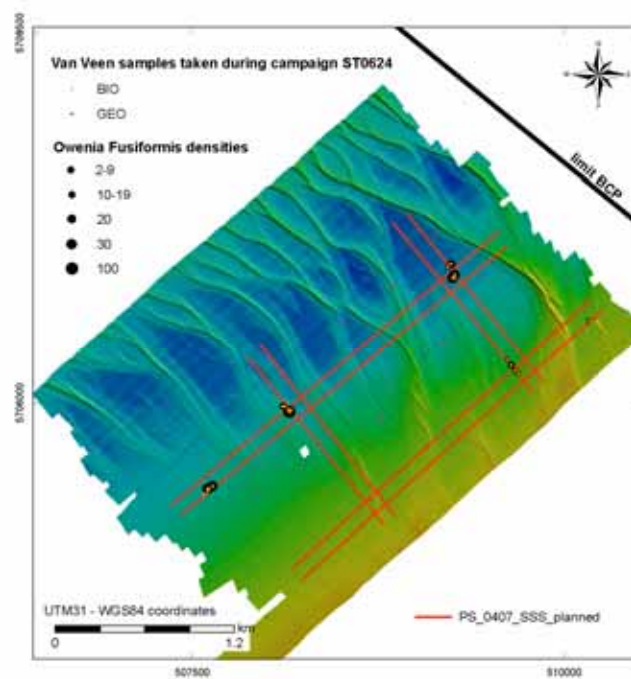


Figure 3: Sailed side-scan lines superposed on the digital terrain model of Belgica campaign ST0624, on which *Owenia fusiformis* patches are observed.

## 5. Operations

### Friday 13 April 2007

- 9h00 – 9h30 Embarkment of UG-RCMG people and material
- 9h30 – 11h00 Transit to the area north of the Vlakte van de Raan
- 11h00 – 15h00 Side-scan measurements
- 15h20 – 17h30 Transit to Oostende and disembarkment

## 6. Remarks on the measurements, instruments, and on the operational course of the campaign

The officers and crew of RV Belgica are acknowledged for their help and skilful handling of the operations.