



EMODnet



European Marine
Observation and
Data Network

EMODnet Seabed Habitats

Unlocking seabed habitat data in Europe

1. About EMODnet Seabed Habitats

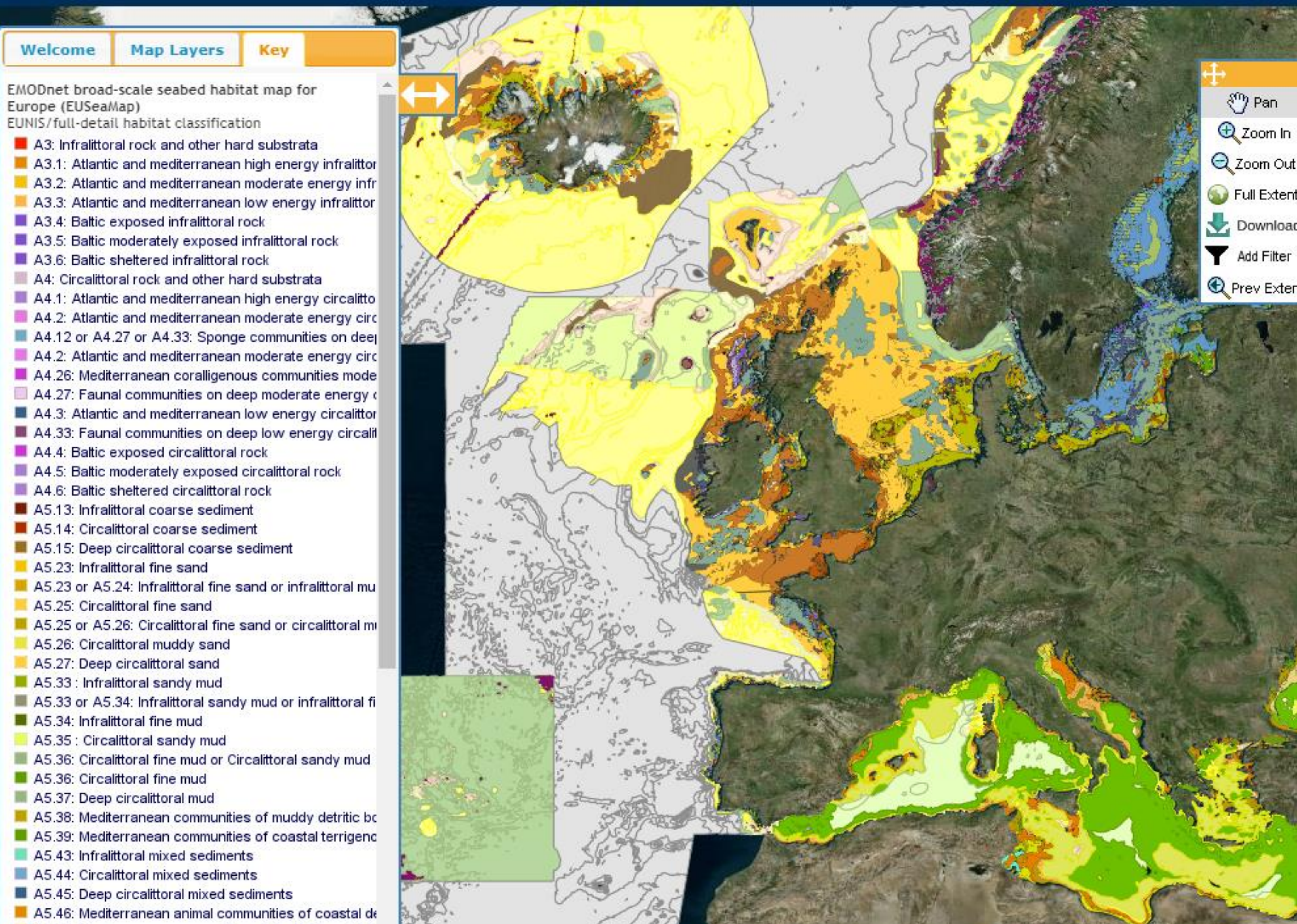
- Seabed Habitats is one of eight themes that comprises the European Marine Observation and Data Network (EMODnet)
- EMODnet assembles long-term marine data, metadata and products, and publishes them on a portal accessible to the wider community
- The portal is designed to be the one-stop-shop for accessing seabed habitat data in Europe
- EMODnet Seabed Habitats is currently in its third phase [2017-2020], and will look to:
 - Increase spatial coverage of EUSeaMap to include the Barents Sea
 - Add a European-wide infrastructure for habitat point data and models of single habitats

2. A European broad-scale habitat map

- EUSeaMap is the flagship product of EMODnet Seabed Habitats
- It is a single broad-scale map that covers the majority of European marine basins, and will be available at three different scales as part of Phase III
- EUSeaMap is available as a map of EUNIS Level 3 habitats or the MSFD Benthic Broad Habitat Types
- These habitat classifications are common across Europe, facilitating accessibility and use within the mapping community

3. Seabed Habitats Portal

Seabed Habitats home Map Viewer Help Search metadata Metadata catalogue Download data Terms of Use



- The Map Viewer is the portal's main feature. It allows you to:
 - Interactively view map layers
 - Download data in GIS format
 - View metadata describing file contents
- EUSeaMap is just one of over 700 downloadable maps available on the Seabed Habitats portal
- Other available datasets include:
 - MSFD Broad Habitat Types 2017
 - OSPAR threatened and/or declining habitats
 - Individual habitat maps from surveys across Europe
 - Habitats Directive Annex I
 - Environmental variables influencing habitat type
- Datasets come equipped with confidence layers, describing the data quality and uncertainty
- The Web Map Service (WMS) or Web Feature Service (WFS) can export data to personal GIS applications or other web mapping portals
- The portal extends the opportunity to submit your own data, and further contribute to data available within the Map Viewer

4. Phase III Partnership

<http://www.emodnet-seabedhabitats.eu>

